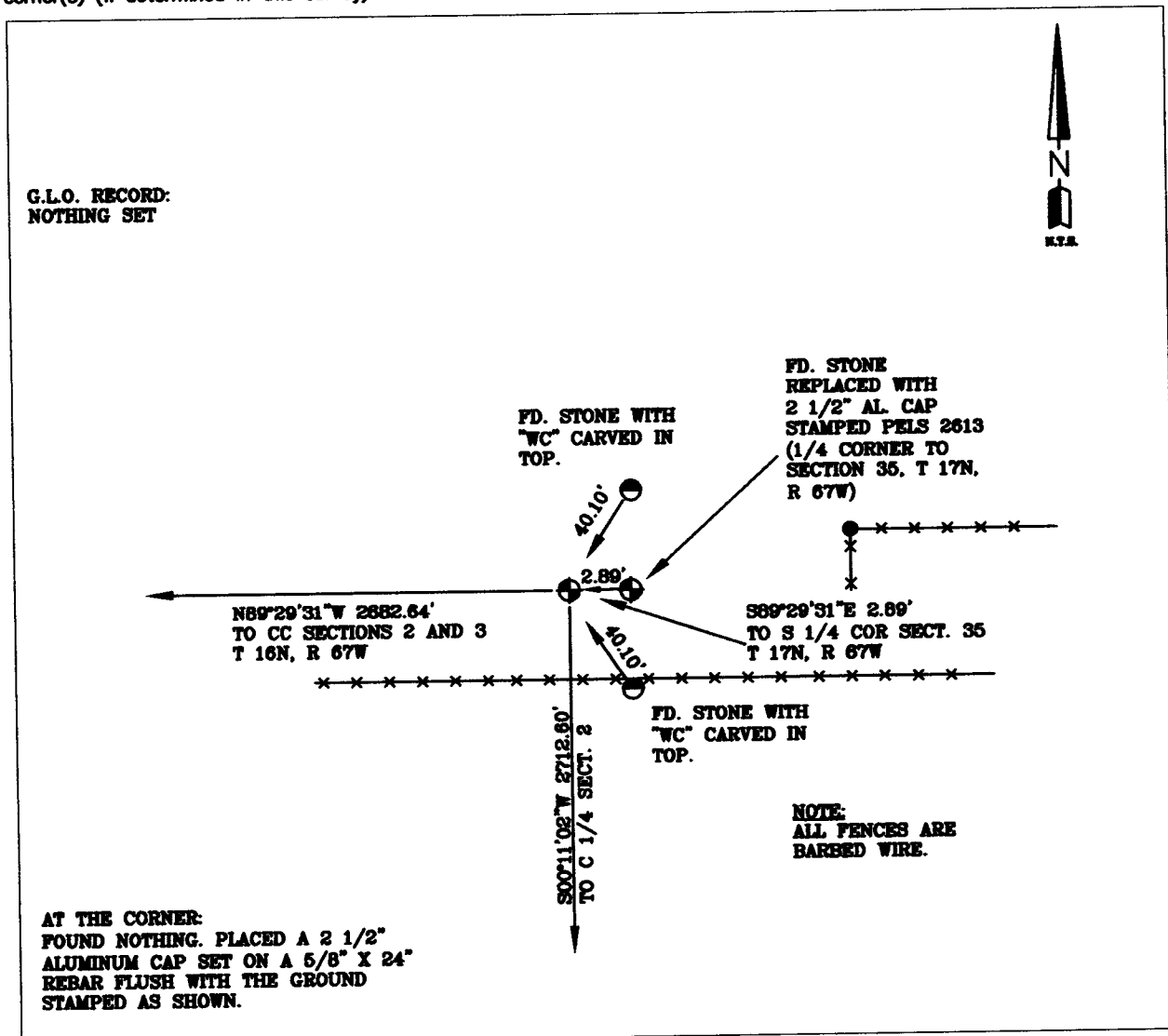


State of Wyoming Corner Record

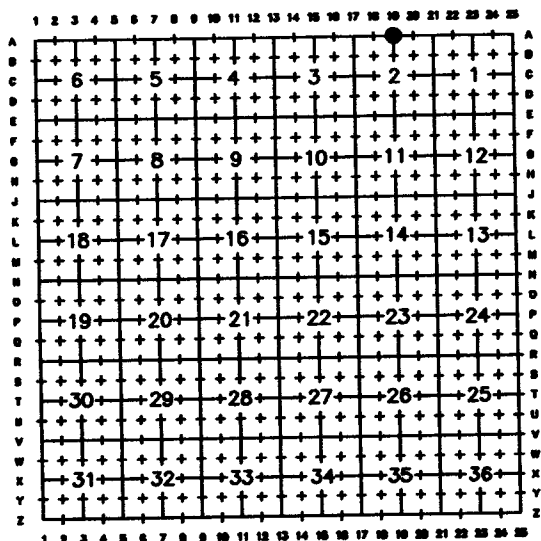
(In compliance with the SWER PERPETUATION AND FILING ACT, Wyoming Statutes, 1997 Section 33-29-140 et. seq., and the Rules and

Record of original survey and citation of source of historical information (if corner is lost or obliterated). Description of corner monumentation evidence found and/or monument and accessories established to perpetuate the location of this corner. Sketch of relative location of monument, accessories, and reference points with course and distance to adjacent corner(s) (if determined in this survey). Method and rationale for reestablishment of lost or obliterated corner.



Date of Field Work: 9/16/06

Cross Index Plat



Western R&D, Ltd.
5809 Yellowstone Rd., Suite B
Cheyenne, Wyoming 82009

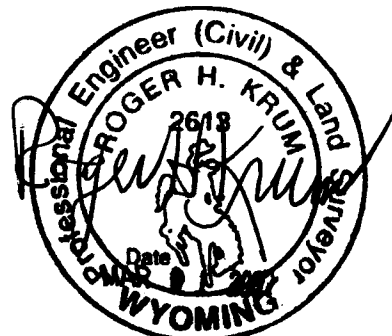
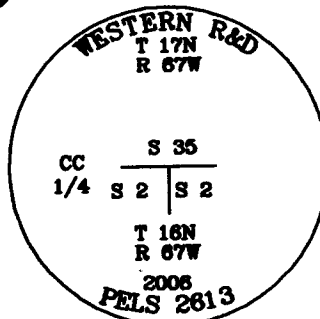
This corner record was prepared
by me or under my direction
and supervision.

SEAL & SIGNATURE

Telephone Number: (307) 637



Denotes Monument Set



Corner Name Closing 1/4 Corner Section 2, T 16 N, R 67 W, 6th P.M.

Cross-Index No.: A-19

County: Laramie Wyoming

SBRPELS/PLSW: March 1994; PLSW January 1998